

Geographic Information System

Services

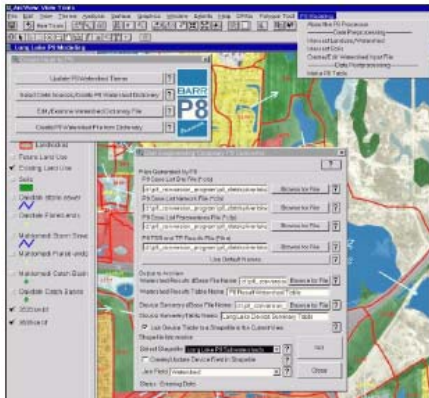
- Application development*
- Consulting*
- Database and web interfaces*
- Environmental data gathering*
- Environmental analysis*
- Environmental planning*

Tools

- ArcCAD*
- ArcIMS*
- Arcinfo*
- AmView*
- AutoCAD Map*
- Mapobjects*

GIS applications

- Pre- and post-processors for scientific models, including air, surface-water quality and quantity and groundwater models*
- Permit management*
- Stormwater utility*
- Boring and well data management*
- Environmental data management and analysis*
- Land use, land cover, wildlife habitat, wetlands, and hydrology*
- Infrastructure management*
- internet and intranet*



We developed this GIS tool an Arcview Extension-to improve user productivity with the P8 water quality model Our application substantiality speeds up the analysis and presentation of model results-saving hours of work and allows results to be displayed graphically

Gentek Information Technology Services, geographic information systems software plays a key role in the management, analysis, and presentation of data. Gentek staff members routinely use GIS in water resources, air, waste management, and environmental management projects. We also develop specialty GIS applications for our client and staff.

Because of the predominance of personal computers in government and private industry, we have concentrated our efforts and skills in using and developing GIS applications for the desktop environment (Windows 95,98, XP and Vista). We understand that the applications and data we manage should be accessible to our clients through their computers and the Internet. Many of the applications we've developed are integrated with common software packages, including surface modelling, word processing, spreadsheet, and relational database programs. We also use global positioning systems as a data collection tool for GIS.

Following are descriptions of the GIS software Gentek uses.

Arc View GIS

Gentek uses Arc View on work stations running Windows NT. Our engineers, scientists, and technicians routinely use Arc View to manage, interpret, analyze, and present a wide range of data. They also use it to integrate into projects many forms of data, including relational database tables, CAD data, images, tabular data, and GPS data. Gentek has used Arc View's object-oriented programming language, Avenue, to enhance the software's capabilities. We've developed customized Arc View applications for internal and client use, such as data conversion, access, and interpretation, and for interfaces to scientific models.

Gentek uses the Arc View extension Spatial Analyst, Image Analyst, and 3D analyst to access, manipulate, and analyze raster-based data and create three-dimensional GIS data sets. Application include analyzing surface conditions, delineating wetlands, and performing volumetric analysis

Map Objects

Map objects is a Windows-based collection of mapping and GIS components that can be integrated into other applications within the Windows development environment. Map Objects allows GIS functionality, such as the ability to perform spatial queries and map layering, to be incorporated into client-sewer applications.

Arc CAD

Arc CAD is used for precision GIS data entry and for building topologically correct ARC/INFO data sets. High-accuracy data entry is made possible by Arc CAD's use of Auto CAD as its drawing engine

Auto CAD Map

Auto CAD Map incorporates GIS functionality within the Auto CAD environment, allowing construction of topologically correct data sets. Auto CAD Map uses Auto CAD as its drawing engine and has a proprietary format for its GIS data sets. It is also capable of importing other GIS data formats, such as Arc View Shape files.